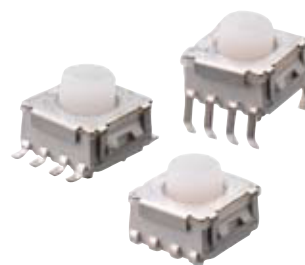


» Features

- Miniature structure with long traveling.
- Several LED colors options.
- Customized cap and symbols are available.
- Combination of switch linked with LED avoid the LED failure during high-temperature processing.
- Water proof IP67 sealed.



» Applications

- Operating switches in all types of electronic equipment such as audio apparatus, office equipment, communications apparatus, TV sets, VCRs, etc.

» Specifications

Rating	50mA 12VDC
Insulation Resistance	100MΩ Min (at 250 VDC)
Dielectric Strength	AC 250V (50/60 Hz for 1 minute)
Contact Contact	100mΩ Max. (Initial)
Electrically Life	100,000 Cycles Min
Ambient Temperature	-40°C~ +85°C
Operating Force	200 ± 50gf
Total Travel	0.7 ± 0.2mm

» LED Specifications

Color	VR	IF	Recommended Operating Current	VF	
				Nor	Max
Red	DC 5V	20mA	20mA	1.7V	2.4V
Green	DC 5V	20mA	20mA	1.9V	2.4V
Yellow	DC 5V	20mA	20mA	1.9V	2.4V
Blue	DC 5V	20mA	20mA	3.0V	3.6V
White	DC 5V	20mA	20mA	3.0V	3.6V

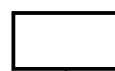
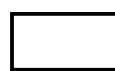
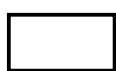
For the specification about the other LEDs, please contact with sales department

» Product selection

TP 618



L



TERMINAL		
D	Dip Type	
GM	Gullwing, SMD	
JM	J bend, SMD	
RV	Right Angle, Dip	
RM	Right Angle, SMD	

	COLOR1	COLOR2
1	Red	
2	Yellow	
3	Green	
4	Blue	
5	White	
6	Pure Green	
7	RGB	
8	Amber	

Knob Length	
A0	1.8mm

Operating Force	
20	200g

Contact Plating	
S	Silver
G	Gold

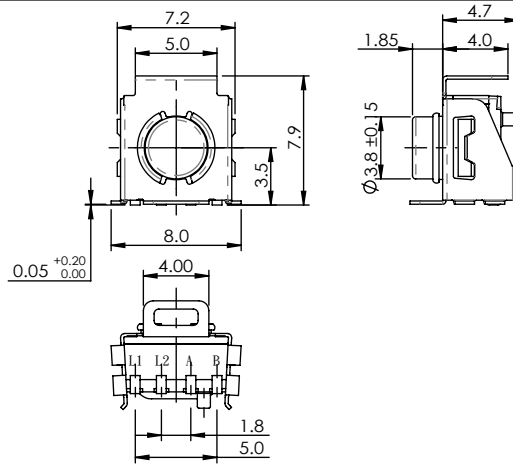
» Operating characteristics

Unit: mm

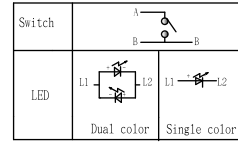
Dimensions

P.C.B Layout

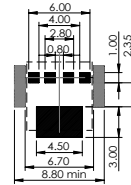
TP618RML



ELECTRICAL SCHEMATIC



PCB Layout (Top View)



General tolerances ±0.1mm